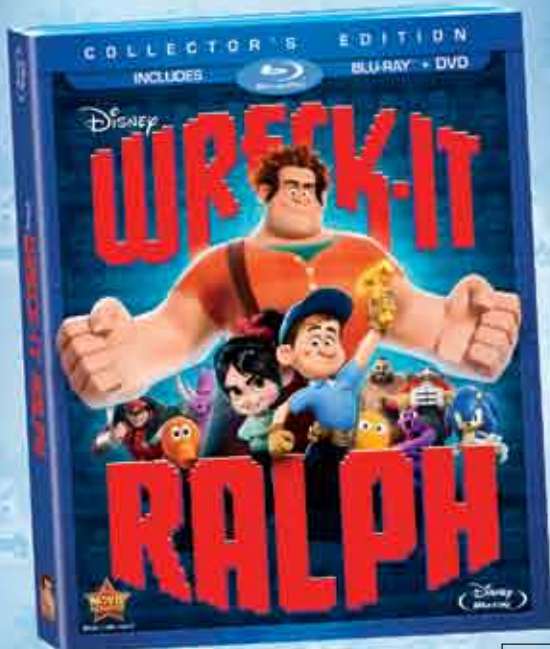


**ON BLU-RAY™
COMBO PACK
MARCH 5**



ALSO AVAILABLE
on **3D**

PG



START HELP FELIX FIND HIS WAY THROUGH THE MAZE
FIXING THE BROKEN WINDOWS ALONG THE WAY

SERGEANT'S WORD SEARCH

Look for words horizontally, vertically and diagonally.

WORDS:

RALPH
FELIX
HERO
CALHOUN
MEDAL
SUGAR
RACE
VANELLOPE
MINTY
TAFFYTA
CANDY
WRECK

F	E	Z	O	R	A	C	E	M	I	N	X
S	R	W	H	J	S	N	A	W	V	I	Z
B	C	A	L	O	U	T	N	R	L	E	O
H	A	V	C	V	G	M	V	E	A	D	R
P	N	X	A	U	A	O	F	C	N	M	P
L	D	V	N	N	R	D	Z	K	I	E	E
A	Y	R	V	A	E	C	B	U	R	D	
R	I	V	O	X	I	L	N	A	B	A	
K	D	R	O	M	Y	P	L	V	A	L	
Y	E	M	I	A	S	Q	P	O	S	U	
H	K	N	P	E	Z	V	M	J	P	V	
U	T	A	F	F	Y	T	A	W	N	E	
Y	B	O	C	A	L	H	O	U	N	I	

FINISH



**YOUR KART
HAS WRECKED.
GO BACK TO
START**

COLOR RALPH



START

HELP VANELLOPE
GET TO THE
FINISH LINE!

Play this game with
2 players. Each player
needs a small object
(like a small piece of
paper) for a space
marker, and a coin.
Heads moves ahead
one space, tails
moves two spaces.
The first player to cross
the finish line wins!

READY FOR



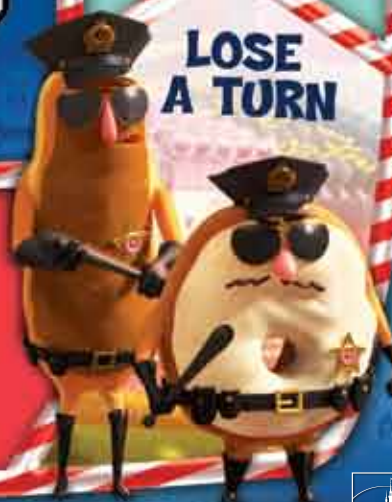
**CY-BUGS
ATTACK!
MOVE BACK
1 SPACE**



**YOUR
GLITCHING HAS
SPED YOU UP.
MOVE
3 SPACES
FORWARD**



**LOSE
A TURN**



Go to disneymagazines.com today for your very special offer!



See your little Princess smile every time she gets an issue.
Get Home Delivery and Save!
Go to disneymagazines.com/parks

Color Jasmine and Aladdin.



Activities from Disney Princess Magazine

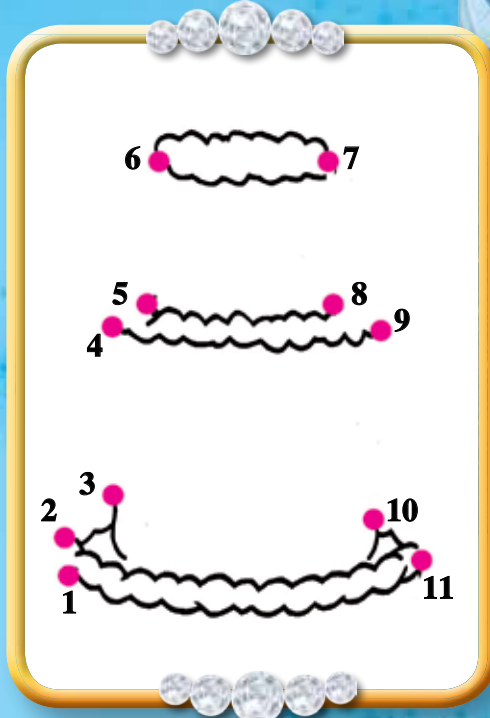
Spot the 5 differences in the pictures of Ariel.



Solve Rapunzel's maze.



Connect the dots to see what it is!



Play Tiana's word games.

Tiana's starting off her birthday **menu** with one of her specialties. To **find out** which one, delete all the **S's** and write the remaining letters in the blanks, as they appear from left to right.

G X U S M S B S O

G _ _ _ _ _

Bring on the main course! Start with the **first** letter, then **circle** every other one and **write** the circled letters in the blanks below.

T A U F R G K H E I Y

T _ _ _ _ _

Every meal ends with dessert. What has Tiana prepared? **Complete** this delicious treat's name by choosing from the letters below.

P D I G

D N U

KIDS' MEALS

FOR GUESTS AGES 9 AND UNDER

Yachtsman Steakhouse

Appetizers

- Chicken Noodle Soup 3.00
- Mixed Green Salad 4.00

Mickey Check Meals

Served with choice of Small Lowfat Milk or Small Dasani® Water

Grilled Chicken Breast 13.00

Entrée: Grilled Chicken with Whole Wheat Spaetzle and Seasonal Vegetables
Dessert: Frozen Yogurt and Berry Push Pop

Baked Fish of the Day 15.00

Entrée: Baked Fish of the Day with Whole Wheat Spaetzle and Seasonal Vegetables
Dessert: Frozen Yogurt and Berry Push Pop

Meets Disney Nutrition Guidelines for Complete Meals without substitutions.

All Entrées served with choice of Small Lowfat Milk, Small Dasani® Water, or Small Minute Maid® Apple Juice

Entrées

Grilled Chicken Breast 9.00

Grilled Chicken with Whole Wheat Spaetzle and Seasonal Vegetables

Baked Fish of the Day 11.00

Baked Fish of the Day with Whole Wheat Spaetzle and Seasonal Vegetables

Mac & Cheese 8.00

Orecchiette Pasta and Meatballs 8.00
with Marinara

Oak-grilled Steak Skewer 12.00

with Mashed Potatoes and Seasonal Vegetables

Desserts

Mickey Puzzle 8.00

Chocolate Brownie Sundae 6.00
served with Vanilla Gelato

Frozen Yogurt and Berry Push Pop 4.00

Soft Drinks and French Fries may be substituted upon request.