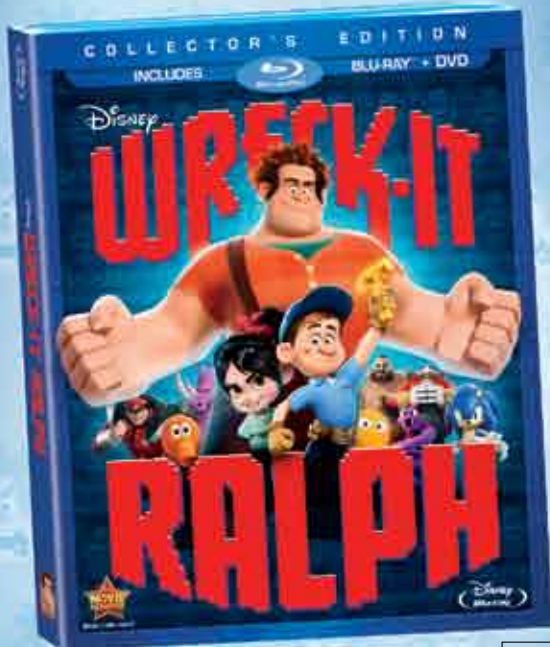


**ON BLU-RAY™  
COMBO PACK  
MARCH 5**



**ALSO AVAILABLE**  
on **3D**

PG



**START** HELP FELIX FIND HIS WAY THROUGH THE MAZE  
FIXING THE BROKEN WINDOWS ALONG THE WAY

## SERGEANT'S WORD SEARCH

Look for words horizontally, vertically and diagonally.

### WORDS:

RALPH  
FELIX  
HERO  
CALHOUN  
MEDAL  
SUGAR  
RACE  
VANELLOPE  
MINTY  
TAFFYTA  
CANDY  
WRECK

F	E	Z	O	R	A	C	E	M	I	N	X
S	R	W	H	J	S	N	A	W	V	I	Z
B	C	A	L	O	U	T	N	R	L	E	O
H	A	V	C	V	G	M	V	E	A	D	R
P	N	X	A	U	A	O	F	C	N	M	P
L	D	V	N	N	R	D	Z	K	I	E	E
A	Y	R	V	A	E	C	B	U	R	D	
R	I	V	O	X	I	L	N	A	B	A	
K	D	R	O	M	Y	P	L	V	A	L	
Y	E	M	I	A	S	Q	P	O	S	U	
H	K	N	P	E	Z	V	M	J	P	V	
U	T	A	F	F	Y	T	A	W	N	E	
Y	B	O	C	A	L	H	O	U	N	I	

**FINISH**



**YOUR KART  
HAS WRECKED.  
GO BACK TO  
START**

## COLOR RALPH



### START

HELP VANELLOPE  
GET TO THE  
FINISH LINE!

Play this game with  
2 players. Each player  
needs a small object  
(like a small piece of  
paper) for a space  
marker, and a coin.  
Heads moves ahead  
one space, tails  
moves two spaces.  
The first player to cross  
the finish line wins!

READY FOR

CONNECT THE DOTS TO  
REVEAL VANELLOPE'S  
NEW RIDE!



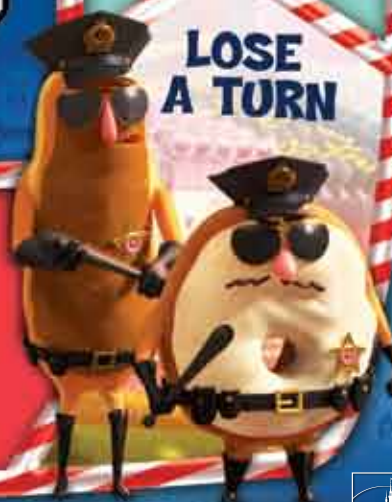
**CY-BUGS  
ATTACK!  
MOVE BACK  
1 SPACE**



**YOUR  
GLITCHING HAS  
SPED YOU UP.  
MOVE  
3 SPACES  
FORWARD**



**LOSE  
A TURN**





Go to [disneymagazines.com](http://disneymagazines.com) today for your very special offer!



See your little Princess smile every time she gets an issue.  
Get Home Delivery and Save!  
Go to [disneymagazines.com/parks](http://disneymagazines.com/parks)

Color Jasmine and Aladdin.



©2013 Disney Enterprises, Inc.

# Activities from Disney Princess Magazine

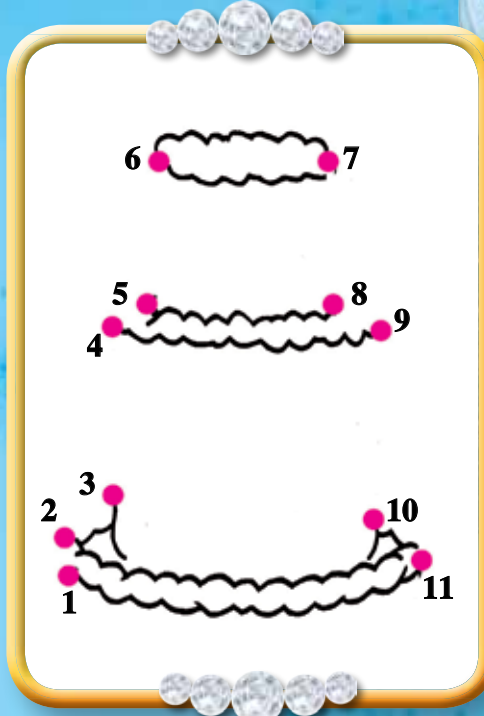
Spot the 5 differences in the pictures of Ariel.



Solve Rapunzel's maze.



Connect the dots to see what it is!



Play Tiana's word games.

Tiana's starting off her birthday **menu** with one of her specialties. To **find out** which one, delete all the **S's** and write the remaining letters in the blanks, as they appear from left to right.

G X U S M S B S O

G \_ \_ \_ \_ \_

Bring on the main course! Start with the **first** letter, then **circle** every other one and **write** the circled letters in the blanks below.

T A U F R G K H E I Y

T \_ \_ \_ \_ \_

Every meal ends with dessert. What has Tiana prepared? **Complete** this delicious treat's name by choosing from the letters below.

P D I G

D N U

## KIDS' MEALS

FOR GUESTS AGES 9 AND UNDER

**Kouzzina**  
by Cat Cora®

All Entrées served with choice of Small Lowfat Milk, Small Dasani® Water, or Small Minute Maid® Apple Juice

### Breakfast

Choice of one (1) Entrée 6.99

**All-American Breakfast**  
with Bacon, Eggs, and a Muffin

**Fresh Fruit Plate**

**Mickey-shaped Waffles**

**Pancakes**

**Egg White, Spinach, and Tomato Omelet**  
served with Potatoes

10516096 BW5111-02 113